

The Salisbury paediatric team have received a referral from your GP and have identified you/your child as suitable to participate in the NuvoAir's home monitoring assessment. Our current wait for outpatient review is longer than we would like and to streamline your/your child's assessment, we have partnered with NuvoAir to explore whether the virtual diagnostic service improves both the speed and quality of your/your child's care.

What are your next steps?

The digital coach at NuvoAir will be giving you a call within the next week to:

- Ensure you are happy to proceed.
- Ensure there are no safety concerns.
- Confirm your shipping details for the equipment.
- Explain what equipment will be delivered.

Once the equipment has been delivered the digital coach will arrange an onboarding session with you where you will be assisted to:

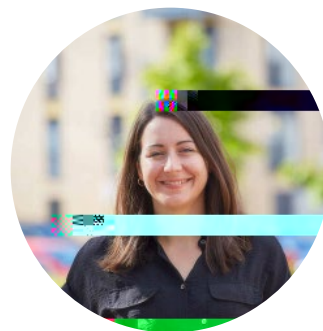
- Download the NuvoAir home app.
- Create an account.
- Set up and pair the spirometer.
- Perform a spirometry (lung function) test.
- Discuss spirometry results.
- Set up and pair the AOS inhaler sensor.
- Set reminders of how frequently to perform spirometry.

NuvoAir's digital coach is there to support you and empower you to understand your respiratory health. If you have any questions or queries you can reach out to your digital coach anytime.

Contacts:



Meg Robshaw
Senior Respiratory Physiologist &
Digital Coach at NuvoAir
megan.robshaw@nuvoair.com
07398 458561



Emma Raywood
Respiratory Physiologist &
Digital Coach at NuvoAir
emma.raywood@nuvoair.com
07486 879804